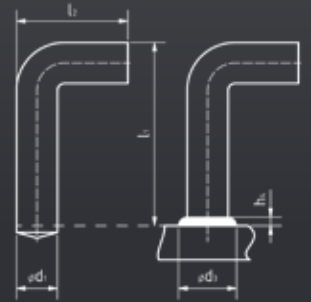




# KÖCO KWS

Drawn arc unthreaded stud

- Material steel, grade 4.8, uncoated.
- Other material and dimensions upon request.



$d_1$	$l_2$	$l_3$	$d_3$	$h_4$	Part-no.	Mass kg/100	Ceramic ferrule	Ferrule Grip
6	30	17	8.5	4	Upon request.		UF 6	Upon request.
	40							
	50							
	60							
8	30	20	11	4	Upon request.		UF 8	Upon request.
	40							
	50							
	60							
10	40	25	13	4	Upon request.		UF 10	Upon request.
	50							
	60							
	70							
	80							
12	40	35	16	5	Upon request.		UF 12	Upon request.
	50							
	60							
	70							
	80							
	90							
100								

<sup>1</sup>  $h_4$  and  $d_3$  are approximate values.

